

Economic Contribution of Yuma County Agriculture

Dari Duval, Claudia Montaña, George Frisvold, José Quintero
Department of Agricultural & Resource Economics, University of Arizona Cooperative Extension
November 2024

About the Study

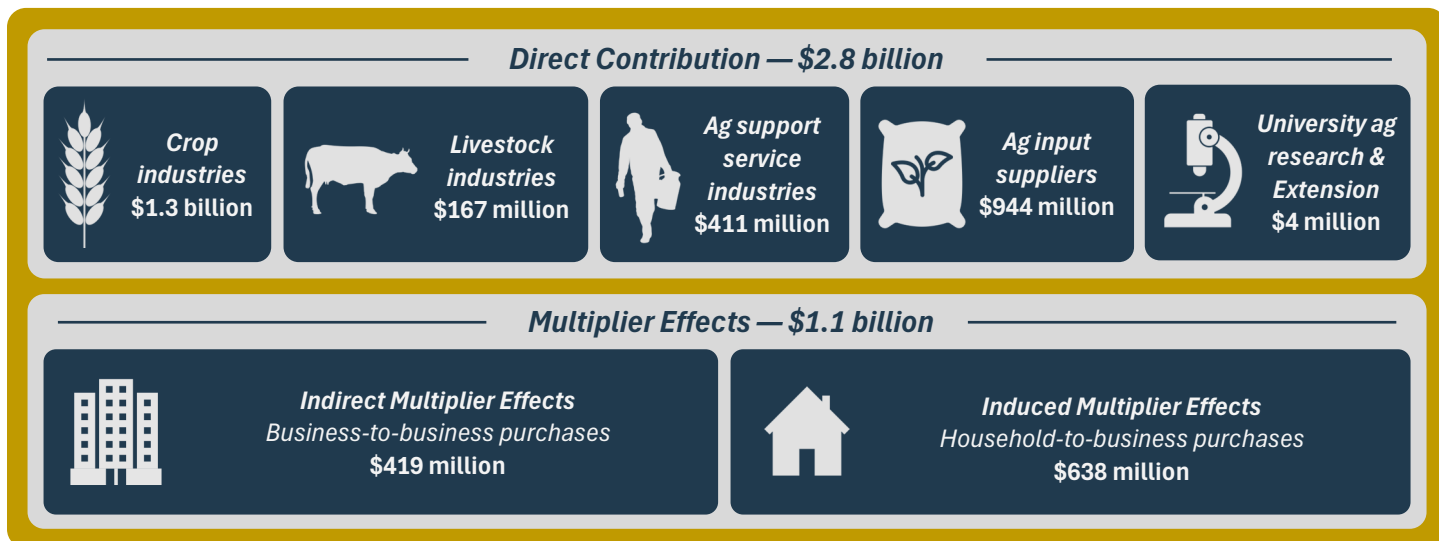
This study quantifies the importance of agriculture and agribusiness to Yuma County, Arizona's economy in 2022. Agriculture and agribusiness includes on-farm production of crops, livestock, and livestock products; agricultural support services; agricultural input suppliers; and university-linked agricultural research and Extension.

What Did the Study Find?

Statewide, Yuma County agriculture & agribusiness supported a total of \$4.4 billion in economic activity (sales) in Arizona in 2022, including multiplier effects



Agriculture & agribusiness had a \$3.9 billion dollar (sales) economic contribution in Yuma County in 2022, including multiplier effects



By the numbers...

3rd

Yuma County's rank nationally out of 2,831 counties in terms of its combined ***sales of vegetables, melons, potatoes, and sweet potatoes*** in 2022.

13th

Yuma County's rank nationally out of 3,074 counties in terms of its ***total crops sales*** in 2022.

15th

Yuma County's rank among U.S. counties for average ***cash rental rate for irrigated agricultural land*** in 2023. This measure is an indicator of the land's productivity. The county ranked among counties in California and Washington known for producing high-value specialty crops, including wine grape growing regions.

0.63

Yuma County's ***Blue Water Footprint*** (BWF). A county's crop BWF is the amount of water consumed to produce \$1,000 worth of crop sales. Yuma's BWF is 0.63, meaning that it takes 0.63 acre-feet of water to produce \$1,000 in crop sales. The average BWF for the Colorado River Basin is 1.44, so Yuma's BWF is less than half of the Basin average, and far below the basin median of 5.67. Yuma accounted for 18% of crop sales in the Basin, but consumed only 8% of the irrigation water.

58x

Employment in vegetable and melon farming in Yuma County is 58 times more concentrated than the national average (known as a location quotient (LQ)). For comparison, Silicon Valley has an LQ of 66.4 for electronic computer manufacturing in, Seattle has an LQ of 34.3 for aerospace manufacturing, Detroit has an LQ of 18.5 for motor vehicle manufacturing, and Hollywood has an LQ of 11.4 for motion picture and sound recording industries.

\$3.2
billion

Estimated ***gross retail value*** of Yuma County-grown vegetable & melon commodities in 2022.

How was the study done?

This study consists of three economic contribution analyses: one for on-farm agriculture (crop, livestock, and agricultural support service industries), agricultural input suppliers, and university research and Extension; one for forward linked economic activity in Yuma County, and a final analysis of the contribution of the same sectors to other Arizona counties using a multi-regional input-output (MRIO) model. The economic contribution analyses were modeled using the IMPLAN Pro 2022 model for Yuma County, Arizona. The model was customized using the best available, most recent data to more accurately reflect the production and economic context in Yuma County. The study relies on a number of data sources, first and foremost the 2022 Census of Agriculture (USDA, 2024).